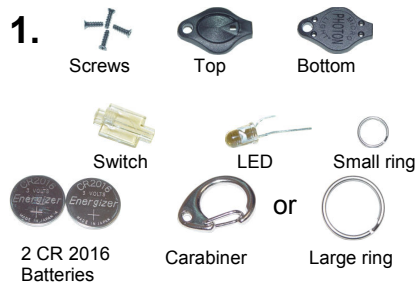
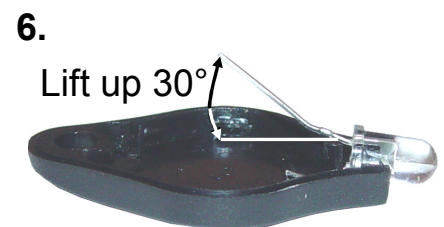
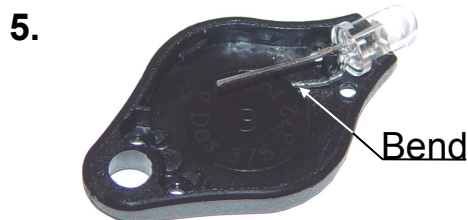


Battery Changing Instructions

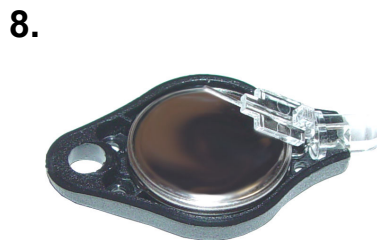
For Photon II White, Blue, Green, Night Vision Green, Purple, & Ultraviolet



1. With pliers remove ring and take screws out with screwdriver size #0. Remove all parts from plastic case; you should have all of these parts to start. 2. Set LED in plastic bottom. 3. Rock LED with screwdriver so that flat side on LED is horizontal.



4. Press short lead (wires coming out of LED) against plastic post. 5. Bend short lead into depression in plastic bottom. 6. Hold bulb of LED in place with your finger and lift long lead up about 30°.



7. Place 2 CR 2016 batteries in with positive side down. 8. Gently place switch on top lead. 9. Carefully place case top on, making sure switch sits properly in hole.



10. Holding screwdriver firmly, screw in all four screws, until screws are recessed just below the surface. 11. Put the ring back on with a pair of pliers.